



**SELWOOD**



# 'C' RANGE



## *Non-Blocking Chopper Pumps*

*3000 Cuts Per Minute - Hardened Impeller & Cutter  
Standard Flange Connections*



# 'C' RANGE

The Selwood C150 chopper pump is the ideal solution for pumping solids, sludge and rags.

Building upon Selwood's market leading reputation, the Selwood C150 chopper pump has been developed with our key partners in the process, industrial and water sectors. All have a common requirement to pump and condition liquids that contain a high proportion of solids, organic matter or rags.

The Selwood C150 chopper pump, with its hardened impeller and cutter (60 rockwell) plus a cutting action giving 3000 cuts per minute, is more than capable of meeting these arduous applications.

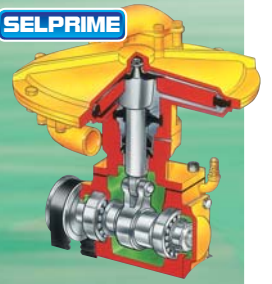
The C150 automatic self-priming diesel has the choice of either a skid mount or mobile site chassis for on-site flexibility. It also comes with Selprime as standard.

## ENVIRONMENTAL

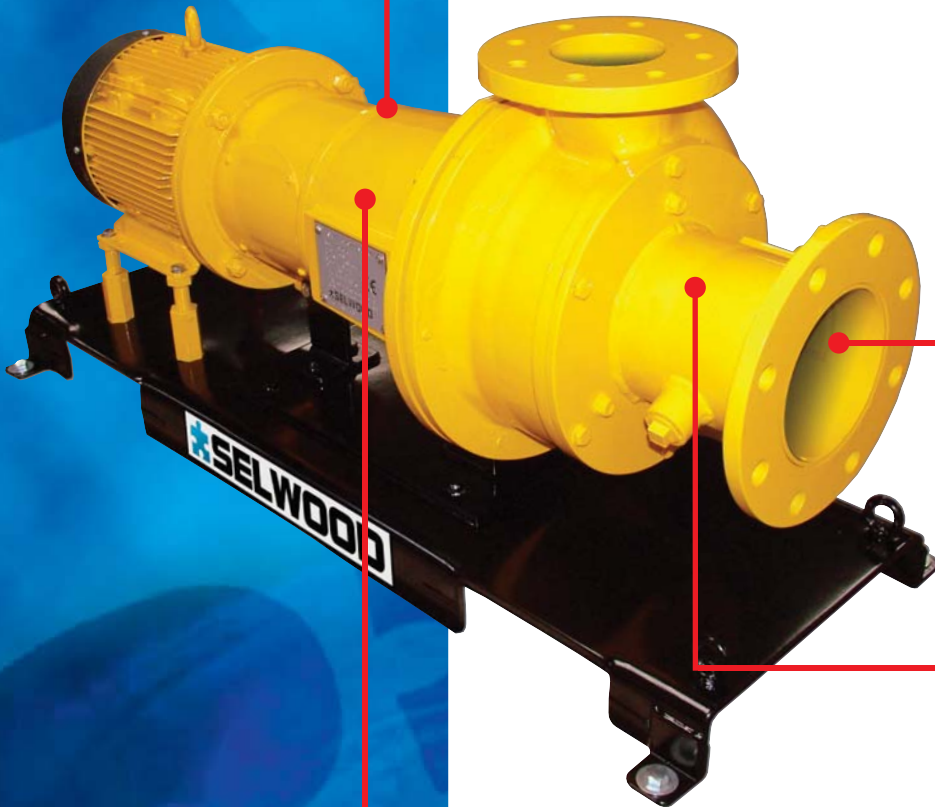
### Selprime

**SELPRIME**

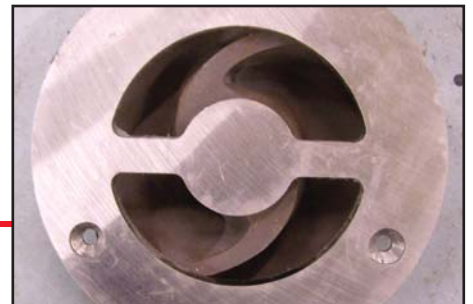
The unique original Selwood self priming system utilising a water tolerant diaphragm air pump. An environmentally friendly design that has none of the problems of oil vapour emissions and oil emulsification associated with other priming systems.



C150 Electric



Failsafe oil filling - impossible to overfill. Either side filling option.



Chopper impeller now connected without nut - so no more clogging!



Inspection door - easy cleaning.



Robust flexible coupling.



Choice of electric motor sizes from 5.5 - 18.5kW. Diesel engine options available.



Sewage treatment works (UK) with SELPRIME



Raw Sewage (UK)



Sewage treatment works (UK)



Sewage treatment works (UK)

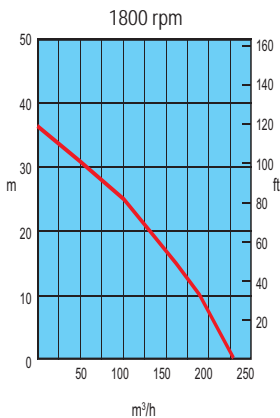


Wood Pulp (UK)

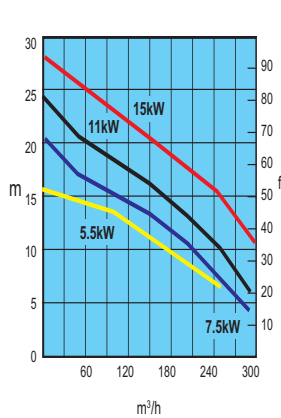
# 'C' RANGE

C150 Diesel

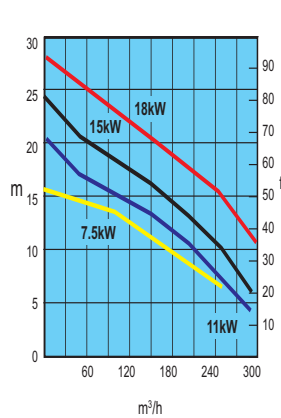
### C150 Diesel



### C150 Electric





### C150 Electric / Selprime



Detailed pump curves are available at [www.selwoodpumps.com](http://www.selwoodpumps.com)



Specification		C150 Diesel	C150 Electric	C150 Electric Selprime
Power Required	kW	20	5.5 - 15	7.5 - 18.5
Pump Speed	rpm	1800	1450	1450
Max. Capacity	m <sup>3</sup> /h	225	300	300
Suction Lift	m	9.1	-	9.1
Air Handling	l/s	24	-	24
Inlet / Outlet Port	mm	150 / 100	150 / 100	150 / 100
Delivery Head	m	37	28	28
Applications				
Clean Water		●	●	●
Water with Fine Solids		●	●	●
Water with Larger Solids		●	●	●
Water with Rags & Fibres		●	●	●
Sludges		●	●	●
Slurries		●	●	●
Oils & Hydrocarbons		●	●	●
Screened Sewage		●	●	●
Unscreened Sewage		●	●	●
Length, Width, Height (cm)* + Dry Weight				
		261 x 122 x 144 (790kg)	-	-
		175 x 100 x 129 (760kg)	-	-
		-	135 x 46 x 57	135 x 46 x 57

\* Open sets exclude fittings

Specifications and illustrations are subject to revision without notice.

## MATERIALS

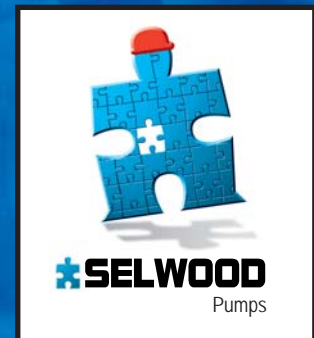
Impeller	High grade SG iron Hardened to 60 Rockwell
Chopping Plate	High Carbon Steel Hardened to 60 Rockwell
Volute	Cast Iron
Seal Plate	Cast Iron
Bearing housing	Aluminium

# 'C' RANGE

*3000 Cuts Per Minute*

*Hardened Impeller & Cutter*

*Standard Flange Connections*



Selwood Limited, Bournemouth Road, Chandler's Ford, Eastleigh, Hampshire, SO53 3ZL. UK

Tel: +44 (0)23 8026 6311 Fax: +44 (0)23 8026 0906

Web: [www.selwoodpumps.com](http://www.selwoodpumps.com) Email: [pumpsales@selwoodpumps.com](mailto:pumpsales@selwoodpumps.com)

